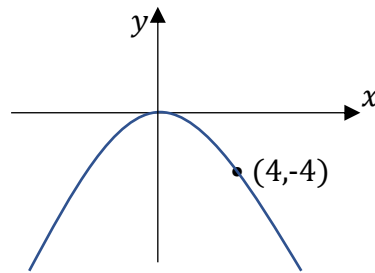


March Daily Tasks: Days 8 - 14

8. The graph of $y = ax^2$, passing through $(4,-4)$ is shown below. Find the value of a .



9. A function has equation $f(x) = 9x + 11$.
If $f(a) = -7$, find the value of a .

10. Evaluate $3\frac{1}{3} + \frac{5}{8}$

11. Fully factorise $3x^2 - 75$

12. Solve the system of equations

$$\begin{aligned} 6x - 2y &= 5 \\ 4x + 5y &= -3 \end{aligned}$$

13. Change the subject of the formula to g .

$$4F = \frac{3h}{g^2}$$

14. Evaluate

when $a = 2$

$$\left(\frac{2}{3}a^2\right)^3$$