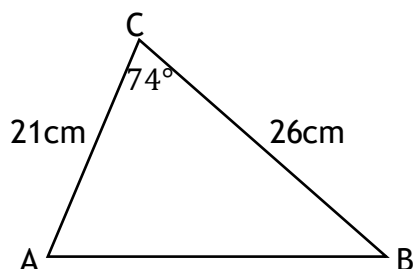


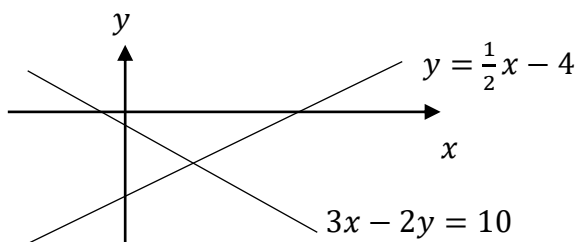
22. Change the subject of the formula below to Q .

$$3P = \frac{5Q^2 + 8}{4}$$

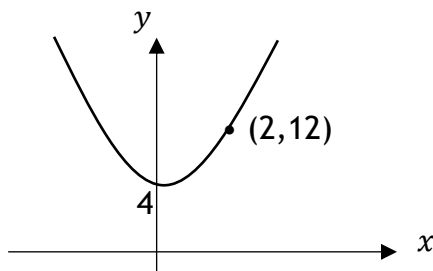
23. Calculate the size of the side AB below.



24. Find the point of intersection of the two lines shown below.



25. The graph with equation $y = ax^2 + b$ is shown below. State the values of a and b .



26. Two employees each earn £24 500 per year.
 Amy negotiates a pay rise of 3.4% per year for each of the next 4 years.
 Julie settled for a pay rise of 4.5% for the next two years and 2.1% for each of the next 3 years.
 Which employee got the better pay rise and by how much?
27. A function has equation $f(x) = 3x - 11$. If $f(p) = 31$, find the value of p .
28. Solve the equation

$$3 \tan x^\circ = 5, \quad 0^\circ \leq x \leq 360^\circ$$